

# COMPANY PROFILE

# 2025

## QUALITY

is never an accident;

It is always the result of

## INTELLIGENT EFFORTS

Scope:

**GENERAL**

Discipline:

**MULTIPLE**

Contact us for more - [info@consquare.net](mailto:info@consquare.net)



Welcome to an environment where

# Challenges are Seen as Catalysts for Progress

---

Where “better” is not a mere goal but a constant standard. We invite you to embark on a journey with us, confident that every step forward is grounded in clarity, precision, and forward-thinking ambition.

# Table of Contents

01

## Company Introduction

---

03 Table of Contents

---

04 About Consquare

---

05 Our Core Values

---

06 & 07 CEO Statement and Our Creative Team

---

02

## Company Services

---

08 Our Services

---

09 The 10 Domains

---

03

## Business Highlights

---

10 We Don't Have a Marketing Team!

---

11 Our Clients and Projects

---

12 ~ 19 Galleries

---

20 Logo Interpretation

---

21 Colours Symbolism

---

# About CONSQUARE

Consquare Consultancy LLC is a forward-thinking, Dubai-based advisory firm committed to delivering

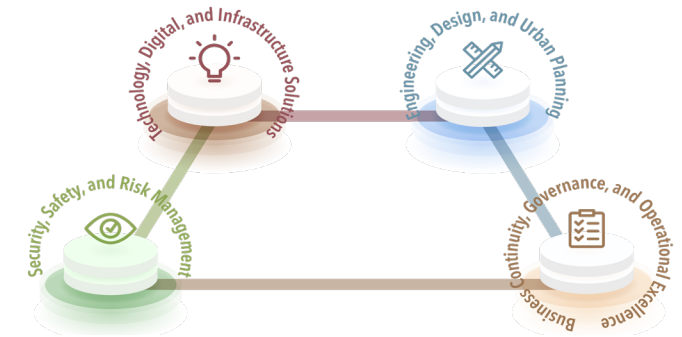
industry-leading solutions across a wide spectrum of engineering and business domains.



Guided by a steadfast focus on quality, innovation, and compliance, we partner with clients to overcome complex challenges and seize emerging opportunities.

Our broad expertise—spanning strategic affairs, architectural engineering, safe cities, smart cities, physical security, data centres, crowd management, business continuity, MEP, ICT, and command-and-control solutions—positions us at the forefront of integrated, multi-disciplinary consultancy.

We believe in the power of synergy, hence, uniting specialists from diverse fields under one banner, we ensure every project benefits from a holistic, coordinated approach. This depth and breadth of knowledge enable us to engineer solutions that transcend immediate needs and lay the groundwork for sustainable long-term growth.



## Technical Rigor

Adherence to renowned standards such as ISO 9001 (Quality Management), ISO 22301 (Business Continuity), and NFPA 101 (Life Safety), affirming our unwavering focus on excellence and consistency.



## Innovation and Adaptability

Harnessing state-of-the-art technologies, from advanced analytics tools to the latest cybersecurity frameworks, to remain agile and responsive in a rapidly evolving global landscape.



## Partnership Mindset

Building enduring relationships with clients by offering custom-tailored strategies that align with organisational visions and operational realities.

# Our Core Values

We champion integrity, transparency, and respect for people and society as the bedrock of all our engagements, ensuring each solution meets the highest ethical standards. We relentlessly pursue excellence by embracing innovation and agility, delivering forward-thinking outcomes that stay ahead

of industry shifts. Our client-centric ethos fosters open collaboration and shared success, while our commitment to sustainability underscores every project with resource-conscious strategies. We also hold that Knowledge is Elegant, creating impeccably crafted reports, designs, presentations, and visual

content that honour our clients' discerning senses and demonstrate our unwavering respect for them. We invest in continuous learning and development, equipping our teams to stay at the forefront of emerging methodologies, to consistently provide enduring value to clients, partners, and communities.



## Our Company Mission

To revolutionise how organisations safeguard, enhance, and expand their operations by delivering integrated, high-calibre consultancy services across engineering, security, IT, and beyond.

We transform ordinary efforts into extraordinary achievements, building a future where quality resonates in every detail and trust underpins every success.

- Integrity and Transparency
- Commitment to Excellence
- Innovation and Agility
- Client-Centric Collaboration
- Respect for People and Society
- Sustainability and Responsibility
- Continuous Learning & Development
- Knowledge is Elegant



## Our Company Vision

We aspire to be the definitive consultancy partner for forward-thinking entities worldwide, recognised for pioneering solutions, resilient strategies, and an unwavering commitment to continual improvement.



# CEO Statement

At Consquare Consultancy LLC, our commitment transcends mere project delivery, our mission is to redefine what organisations can achieve when guided by forward-looking strategy, robust engineering principles, and an unwavering

pursuit of excellence. In today's world, resilience is the hallmark of success; to that end, we champion standards and draw on internationally recognised frameworks to ensure every outcome is resilient, value-driven, and enduring.



## Munaf Al Nidawi

MSyI | M.ISRM | ATD | CDCDP | CRCM | CCAP | CCSE

CEO / Founder / Chief Consultant

Our diverse portfolio, encompassing everything from physical and cyber security to AI engineering, is rooted in the belief that Knowledge is Elegant. We honour this ethos through meticulously crafted reports, designs, and systems that harmonise functionality, innovation, and aesthetic finesse.

As CEO, I take personal pride in our capacity to bridge theory with hands-on experience. In tandem with a global network of subject-matter experts, we deliver solutions that not only address current market needs but also anticipate the future demands of an ever-evolving landscape.

By entrusting your endeavours to Consquare, you join a legacy of clients,

both governmental and private, that have capitalised on our multi-disciplinary expertise to become stronger, smarter, and more adaptable. We hold integrity and transparency at the core of our values, recognising that trust is nurtured through data-driven insights, ethical practice, and affective success.

I invite you to explore the broad spectrum of services we offer. Whatever your challenge, be it designing state-of-the-art command centres, implementing advanced enterprise architecture, or fortifying crucial infrastructure, our dedicated team stands ready to walk alongside you, from initial concept to final execution.



All of the logos are owned and represented by their original owners and related entities only. Mentioning them here just to represent that I am either certified by, member of, accredited by, or trained by these entities, without any other claim or association.

# Our Creative Team

## Our Consulting Engine

From MEP modelling and blast analysis to AI platform architecture and national security master planning, our team is calibrated to think big, act fast, and deliver with excellence.



Behind every secure zone, resilient city, or intelligent system we design, stands a team that doesn't just follow standards, but defines them. At Consquare, our consultants are not just experts in their fields, they are architects of transformation, engineers of trust, and strategists of operational excellence. This is not just a team; this is our consulting engine.



### Academic Credentials

Our senior consultants and technical specialists hold a range of postgraduate degrees from internationally recognised institutions, including PhD, MSc, HrD, and BSc in (Electrical/Mechanical/Civil Engineering, Architecture, Military, Management, Accounting, Statistics, IT, AI, Physics, and Project Management).



### Professional Certifications

Our team is distinguished by its top-tier international certifications, many of which are considered gold standards in their respective disciplines like (MSyl, CCAP, CRCM, CDCDP, RCDD, DCDC, CCIE, CISSP, M.ISRM, ATD, CCSE, LEED AP, PMP, TOGAF, ISO 27000, NFPA, CPTID, and many others).



### Specialised Skills

BIM LOD400+ modelling, mCFD and agent-based simulations, blast and acoustic analysis, PSIM/SCADA/VMS orchestration, AI/ML engineering, and critical infrastructure zoning, designing resilient command centres, optimising data centre airflow, and modelling complex crowd behaviours, our team operates with scientific precision and systems-level insight.

# Our Services

We deliver comprehensive, end-to-end consulting solutions that intertwine expertise from multiple disciplines into one coherent framework. It is a one-stop service provision.



## COMPREHENSIVE

Our guiding principle, drives us to produce meticulously crafted deliverables that embody technical precision, aesthetic finesse, and enduring value.

We align our work with recognised international standards, ensuring each project reflects best-practice benchmarks. In this chapter, we provide an overview of our service landscape, designed to empower organisations with robust, future-proof strategies. Consquare's services are designed to exceed expectations, cultivate resilience, and deliver measurable value.

## STRATEGIC

## MULTI DISCIPLINARY

At Consquare Consultancy LLC, we provide deep technical expertise and institutional insight across ten synergistic domains. Our service portfolio spans the lifecycle of secure, intelligent, and resilient infrastructure, bridging engineering, digital innovation, command systems, regulatory compliance, and organisational transformation.

We do not merely consult, we architect systems, engineer readiness, and institutionalise resilience. We stand as a one-stop partner for organisations seeking to flourish in an era of constant innovation and heightened global challenges.

## INTEGRATED



We offer a holistic, forward-thinking approach that fuses technical discipline with creative problem-solving. Rooted in data-driven insights and bolstered by our commitment to sustainability and ethics, Consquare's services are designed to exceed expectations, cultivate resilience, and deliver measurable value.

### Engineering and Infrastructure Consulting

Design and supervision of MEP, ELV, ICT, and smart systems, delivering compliant, efficient, and resilient infrastructure.

### Digital Transformation & Technology Strategy

Strategic digital advisory including ERP, cloud, IT governance, and digital maturity enablement for public and private institutions.

### Smart Cities and Safe Cities

Design of fully integrated platforms for urban surveillance, emergency response, and smart governance built on secure, scalable IoT frameworks.

### Artificial Intelligence & System Modelling

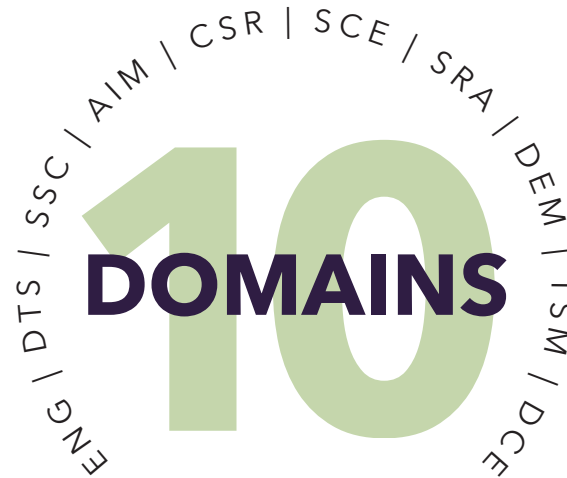
Design and modelling of AI for public safety, traffic, behavioural prediction, and decision-support across critical systems.

### Command Centres, Security Engineering and Operational Resilience

Comprehensive design of SECC, NG911, and DSOE environments with full PSIM, crisis planning, business continuity and multi-agency workflow integration.

### Safety, Continuity and Compliance Engineering

Electronic safety, HVM, fire systems, and ISO/HCIS-aligned continuity planning for secure and regulated operations.



### Strategic, Risk and Regulatory Advisory

Board-level guidance on ERM, master planning, legislation drafting, and institutional transformation for long-term resilience.



### Dynamic Engineering and Specialised Modelling

Blast, acoustic, CFD, and evacuation simulations supporting predictive design for complex, safety-critical environments.

### Traffic Engineering and Smart Mobility

Traffic assessments, crisis routing, ITS planning, and AI-enabled flow modelling for safe, efficient, and responsive mobility. Crowd related consulting.

### Data Centre Strategy, Design & Engineering

Full lifecycle consultancy for Tier III/IV data centres, including MEP, security, IST, and ISO/Uptime compliance.

# We Don't Have a Marketing Team!

At Consquare Consultancy, we never relied on advertisements, sales agents, or glossy campaigns. Since 2007, we've delivered over 100+ projects annually, entirely through referrals, repeat business, and word of mouth.

Our clients speak for us, not slogans. Every contract awarded is a vote of trust. Every project delivered becomes our next recommendation. We don't market, we deliver, and our clients do the rest.



01

## WE BUILT A BUSINESS ON SUBSTANCE, NOT SLOGANS

In a market saturated with advertising, we chose a different path: to let our work speak for itself. We don't run campaigns, we run projects that matter. Every success story, every resilient system, every secure facility is our proof of value. Clients come back not because of marketing, but because we deliver, consistently, precisely, and without compromise.

02

## OUR CLIENTS ARE OUR ONLY ADVERTISERS

We've delivered over 100 projects every year, since 2007, without a sales team, and without promotion. Our only marketing engine is trust. Word of mouth from satisfied sovereign entities, government institutions, and global developers is what drives our business. When clients recommend us to others, it's the most powerful validation of all.

03

## WE DON'T SELL A BRAND, WE UPHOLD A REPUTATION

For us, every project is a reflection of who we are. Our reputation isn't made in brochures, it's forged in control rooms, in boardrooms, and in high-stakes environments where failure is not an option. Our clients rely on us not because we market ourselves, but because we've proven, again and again, that we can deliver on complexity, compliance, and criticality.

04

## THIS IS NOT A MARKETING STATEMENT, IT'S A STATEMENT OF FACT

We don't have a marketing department. No PR campaigns. No social media managers. What we do have is something rarer: long-standing client relationships, repeat engagements, and a referral network built entirely on performance. In a world of noise, Consquare grows quietly—because results travel faster than slogans ever could.

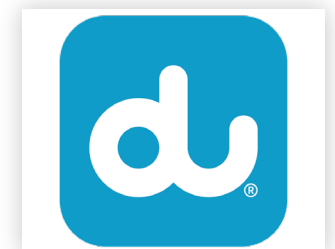
# Our Clients and Projects

The clients featured here represent only a portion of the institutions we are privileged to serve. Many engagements remain confidential due to the sensitive nature of our work, while others are not shown due to limited space. We extend our genuine gratitude to all our clients, named or unnamed, for their continued trust, collaboration, and partnership over the years. Each one plays an essential role in our journey.



**The Best Advertising** is done by  
satisfied customers

Philip Kotler, Kellogg School of Management









OYOON Project with Dubai Police



Museum of the Future - Dubai



Dubai Metro and Tram



Data Centre of the Ministry of Energy - Dubai



Dubai Water Canal



Blue Watsr - Dubai



Dubai Harbour



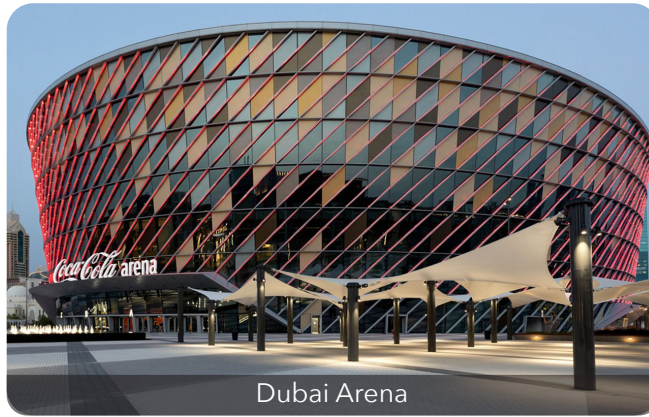
DUBAL - Dubai



Air Taxi Stations - Dubai



Sharjah University



Dubai Arena



American University of Sharjah



Sheikh Zayed Grand Mosque



Atlantis Hotel - Dubai



Omniya Tower - by Zaha Hadid - Dubai



Dubai Parks and Resotrs



IMG Park - Dubai



Kayya Oasis Resort - KSA



Futuristic C3 - Dubai Police



Expo 2020 - Dubai



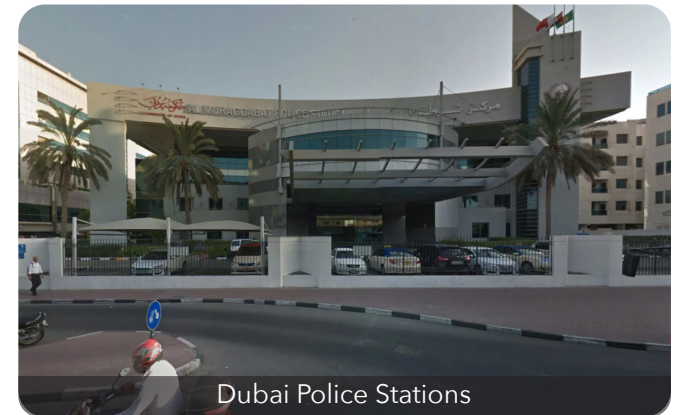
Legoland Park - Dubai



Security and Safety Training with Dubai Police



Taj Mahal & Bollywood Park - Dubai



Dubai Police Stations



Dubai Correctional Institutions



Sharjah Central Prison



Rehbilation Centre - Abu Dhabi



ADNOC Drilling Operations Centre



Hamad International Airport - Doha



Meydan Horse Racing Field - Dubai



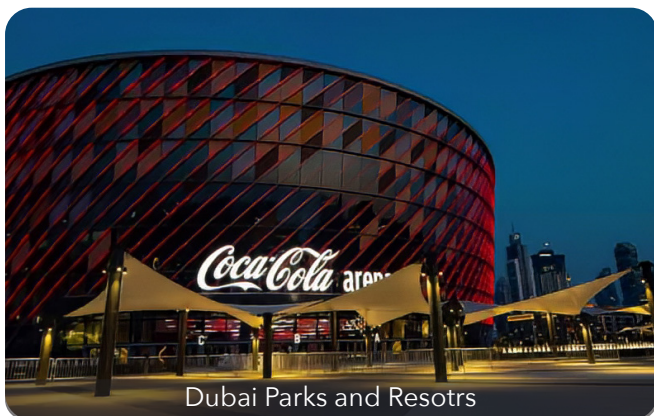
Burj Al Arab 7 Stars Hotel - Dubai



Emirates Towers - Dubai



Makers District - Abu Dhabi



Dubai Parks and Resorts



Marsa Al Seef - Dubai



Motiongate Park - Dubai



Misk City - KSA



Military Simulation and Training Compound



Al Basrah Safe City and Smart Traffic - Iraq



ENOC Petroleum Plants - Dubai



Security Operations Centre - Egypt



City Walk - Dubai



Jumeirah Beach Residence - Dubai



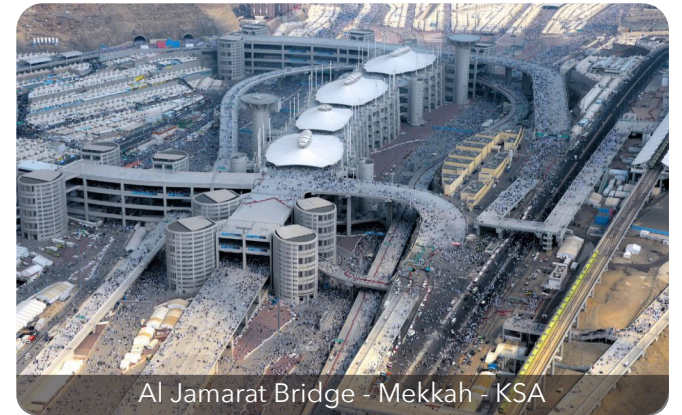
Golden Mile - Palm Jumeirah - Dubai



Red Sea - KSA



Masar Project - Mekkah - KSA



Al Jamarat Bridge - Mekkah - KSA



KAPSARC by Zaha Hadid - KSA



World Cup 2022 - Crowd Management & Security



Global Village - Dubai



Outlet Village Mall - Dubai



Dubai Mall



Mall of Emirates - Dubai



# LOGO

## Interpretation



**Branding demands commitment; commitment to continual re-invention; striking chords with people to stir their emotions; and commitment to imagination. It is easy to be cynical about such things, much harder to be successful.**

*Sir Richard Branson*

CON is the first three alphabetical characters from the word "Consulting".

Square is that meaningful shape of equal edges and right angles.

Furthermore, "Square" in the dictionary also means properly arranged; in good order; fair and honest.

We are trying to say "Consulting Square" to describe a dream to establish a group of four consulting companies synergy conducting multiple disciplines Consulting business.



**CONSQUARE**  
CONSULTANCY

Square shape is to say we are even, non-aligned and independent. Smooth outer edges of the square shape are representing the easiness to interface with our company. We undertake the necessary processes to isolate the clients from their challenges' complexity.

Q shape is to reflect our key conceptual factor, the "QUALITY". Our company is established on the concept of providing the maximum possible quality of services to the clients and to work on adopting it by all of the team members.

## Corporate Information

The official registration and corporate information of Consquare Consultancy

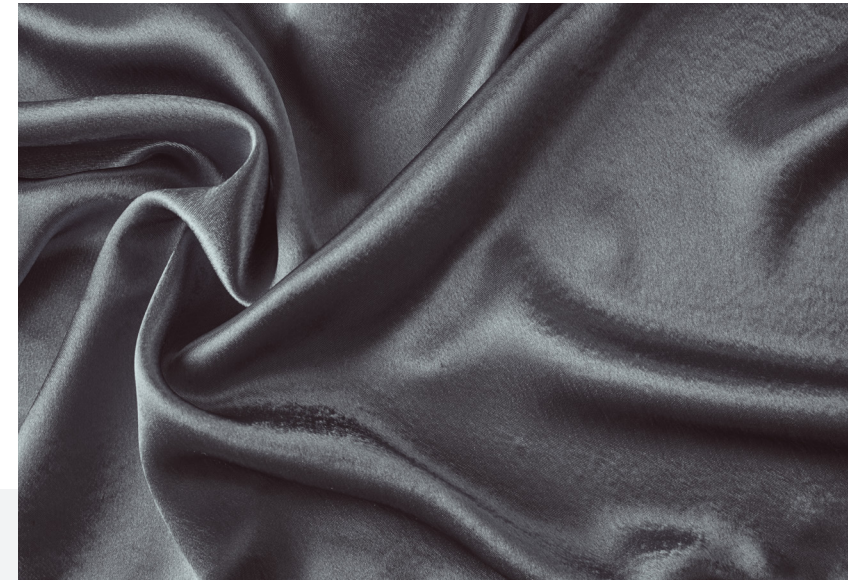
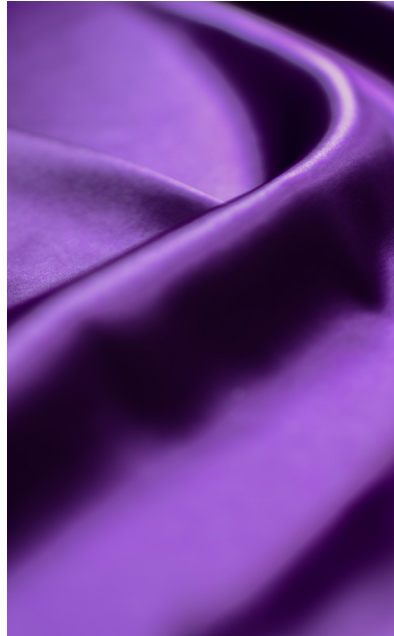
- Trade Name: **Consquare Consultancy**
- Legal Type: Sole Establishment
- D&B D-U-N-S ® Number: 561740072
- Establishment Date: June 4th, 2007
- Main License Number: 596253
- License Issuer: Dubai Economy (DE)
- SIRA License Number: 2014190618961
- ISO 9001:2019: ADU-1019



دبي  
الاقتصاد والسياحة  
Economy and Tourism



غرفة دبي  
DUBAI CHAMBER



## Colours Symbolism

We believe that power of colour is both emotional and practical. There is a message each colour is saying which can affect how clients feel when they look at a brand, simultaneously it helps a brand stand out in the crowd.

1. **Grey** represents formality, richness, elegance, seriousness, distinctiveness, boldness, sombreness, authority, practicality and a corporate mentality. It is neutral one to refer to our independence and non-aligned strategy.
2. **Royal Purple** represents royalty. A mysterious colour, it is associated with both nobility and spirituality. The opposites of the hot red and the cool blue. It combines both to create this intriguing colour. It is to say that we target high profile clients.

### Considerations of the Brand

The keys to brand success are self-definition, transparency, authenticity and accountability.



### Address

Office M08, the Red Avenue  
building, Road 57, Al Garhoud  
area, Dubai,  
UAE



### Telephony

Phone: +971 (4) 234-4484  
+971 (4) 259-2599  
Fax : +971 (4) 234-4483

Copyright © 2025 by Consquare Consultancy LLC

All rights reserved. No part of this publication may be reproduced, distributed, or transmitted in any form or by any means, including photocopying, recording, or other electronic or mechanical methods, without the prior written permission of the Consquare Consultancy, except in the case of brief quotations embodied in critical reviews and certain other non-commercial uses permitted by copyright law. For permission requests, write to the publisher, addressed "Attention: Permissions Coordinator," at the address above.

---

© 2025 All Rights Reserved.